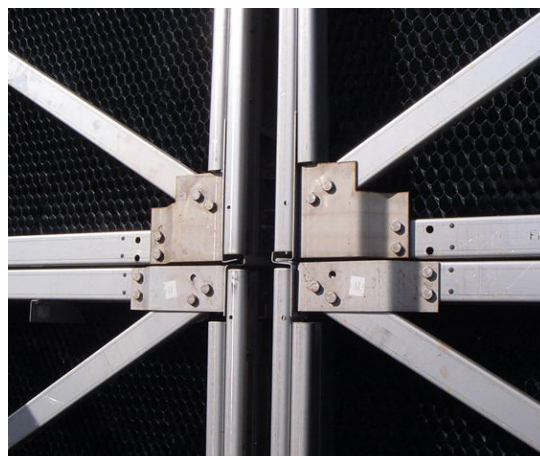


Florida Building Code



Benefits of Following the Florida Building Code

- Florida state law compliance
- Reduce liability
- Timely construction schedule and permitting process
- Avoid penalties for non-compliance
- Avoid extensive downtime



Ensure Your Building is Up to Code

What is required by the Florida Building Code? *

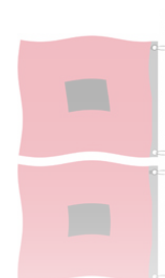
*(FBC Mechanical 908.1 / 908.4)

- Design the cooling tower as a structure per the mechanical code
- Structural code determines psf the tower must meet

Building Design Engineer (engineer of record)

*(FBC Building 1603.1.4)

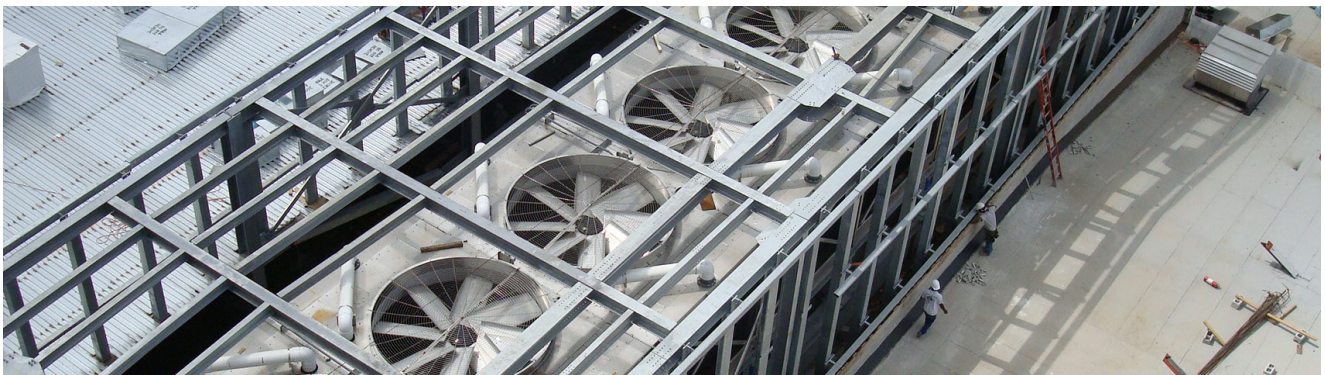
- Provide site specific wind load (psf) including:
 - Wind speed (three second gust)
 - Wind importance factor
 - Wind exposure
 - Elevation to base of cooling tower



Cooling Tower Manufacturer

- Conforms to anchorage and structural requirements
- Support reactions; a function of psf
- Anchorage attachment details
- Florida P.E. sealed certification of cooling tower wind load capability

Everyone involved – the engineer, contractor, code officials, owner and manufacturer – has a responsibility to comply with the Florida Building Code. Marley cooling towers are modified specifically to comply with the Florida Building Code. Make sure your cooling towers are designed to meet this very demanding code. It's not a choice, it's the law.



With seven Marley representatives located throughout the state of Florida, we have you covered.
Locate your local Marley rep at spxcooling.com

SPX COOLING TECHNOLOGIES, INC.

7401 WEST 129 STREET
OVERLAND PARK, KS 66213 USA
913 664 7400 | spxcooling@spx.com
spxcooling.com

SB-18 | ISSUED 03/2017

COPYRIGHT © 2017 SPX CORPORATION

In the interest of technological progress, all products are subject to design and/or material change without notice.

