

# Marley Replacement Parts

The Right T.E.C.H. for Your NC® Cooling Tower

TECHNOLOGY • EQUIPMENT • COMPONENTS • HELP

MARLEY 

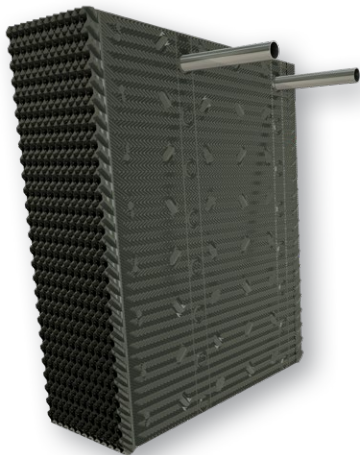


# Marley Replacement Parts

FOR NC® COOLING TOWERS

## PROTECT YOUR INVESTMENT WITH GENUINE MARLEY® PARTS

Genuine Marley Parts from SPX Cooling Technologies, Inc. were installed at the factory to build your Marley Cooling Tower. To uphold the quality engineering and performance that define your cooling tower, insist on genuine Marley Parts for any service, repair or rebuild project. With nearly 100 years of experience fabricating cooling towers, trust SPX to provide the right TECH throughout your cooling tower's lifespan.



### ① Marley MX Fill

When selecting replacement heat transfer fill, it is important to weigh several factors including thermal performance and drift rates, ease of handling, installation complexity and labor costs. SPX Cooling Technologies offers a range of PVC fill types and configurations to meet your specific requirements, including Marley MX75 Hanging Fill, MBX Pack Fill and award-winning MBX EZ Pack Fill.



### ② Marley X7 Fan

The wide chord blade design delivers superior air flow and pressure capability at low speed and is designed for quiet operation. The high performance X7 airfoil is one of the most efficient in the industry today.



### ③ Fan Drives

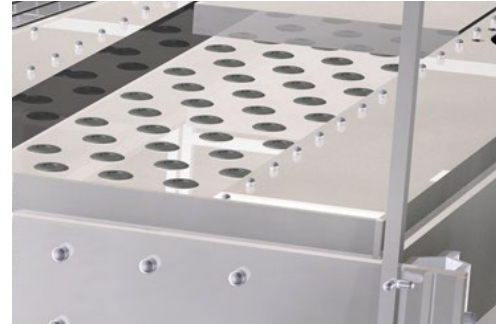
Technologies used to transmit power in a cooling tower include gear drives, belt drives and direct drives. The Marley Geareducer® gearbox is standard equipment in Marley NC® Cooling Towers. A belt drive or direct drive permanent magnet motor are also replacement options.





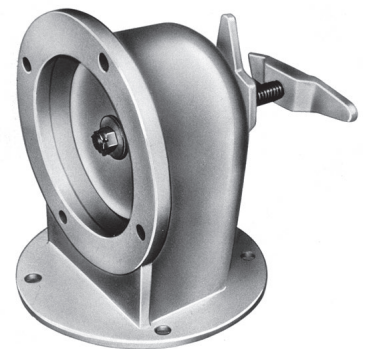
#### ④ Marley Hot Water Basin

Basins available in galvanized or stainless steel receive hot water piped to each tower cell. Basins are sealed and bolted at factory and include removable covers. Removable, interchangeable polypropylene nozzles installed in the basin floor use gravity flow to provide full water coverage of the fill.



#### ⑤ HC Flow Control Valve

The HC valve regulates water flow between hot water basins and between multiple tower cells. Disc-type valve has cast iron body and stainless steel operating stem with locking handle to maintain water flow setting.



#### ⑥ Marley Spiral Target Crossflow Nozzle

Spiral Target nozzles comprise two injection-molded polypropylene parts - the body and orifice cap. The orifice cap is available in 11 diameters ranging from .362" - 1.00" to allow adjustment in basin water levels and flow rates.



# Marley Replacement Parts

FOR NC® COOLING TOWERS

MARLEY®

THE RIGHT TECH TO KEEP IT

COOL

Find your Marley technical expert at [spxcooling.com/relocator](https://spxcooling.com/relocator), 1-800-4-Marley or [spxcooling@spx.com](mailto:spxcooling@spx.com).

## SPX COOLING TECHNOLOGIES, INC.

7401 WEST 129 STREET  
OVERLAND PARK, KS 66213 USA  
913 664 7400 | [spxcooling@spx.com](mailto:spxcooling@spx.com)  
[spxcooling.com](https://spxcooling.com)

MRP-NC-19 | ISSUED 06/2019

©2019 SPX COOLING TECHNOLOGIES, INC. ALL RIGHTS RESERVED.

In the interest of technological progress, all products are subject to design and/or material change without notice.

